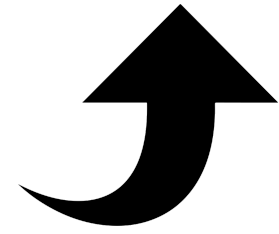


# XT660d FIRMWARE UPDATE 1.00.14



446.0-446.1MHz

LESS CONGESTION  
BEST PERFORMANCE

**16 ADDITIONAL FREQUENCIES AVAILABLE FOR YOUR XT660d  
& IMPROVED PERFORMANCE.**

Your existing Motorola Solutions XT660d radio with a date code of 2017 can be upgraded to obtain an additional 16 digital frequencies to take advantage of the new digital frequency with the implementation of ECC Decision (15)05. If your XT660d has a date code of 2018 or after, your radio will already have an additional 16 frequencies. You can enjoy the advantages straight away with the latest CPS software and via the radio itself by navigating to the channel settings.

User experience improvements have been issued within this firmware update to improve TX activation when a accessory is connected to the radio. Applicable for both 2017 and 2018 date coded XT660d.

---

The date code of your XT660d radio is located on the battery chassis. To see this, remove the battery and the date code is shown on the top right of the Serial Number label.

Additional 16 digital frequencies enabled with this firmware update as shown below.

446.003125Mhz	446.053125Mhz
446.009375Mhz	446.059375Mhz
446.015625Mhz	446.065625Mhz
446.021875Mhz	446.071875Mhz
446.028125Mhz	446.078125Mhz
446.034375Mhz	446.084375Mhz
446.040625Mhz	446.090625Mhz
446.046875Mhz	446.096875Mhz

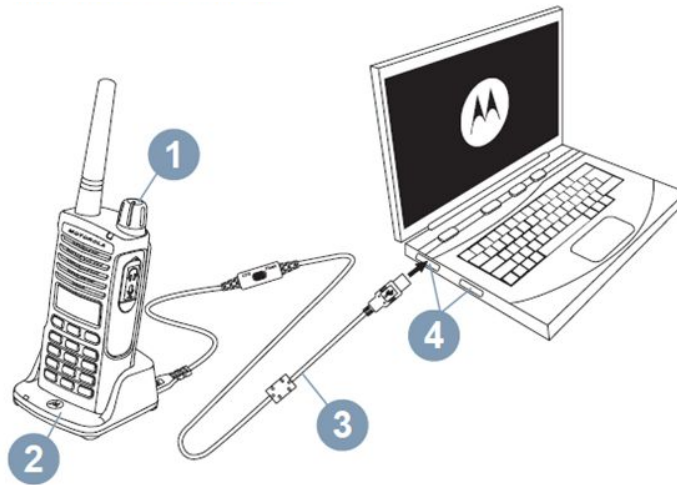


**GETTING STARTED**

**PREREQUISITES & EQUIPMENT REQUIRED**

**Computer System Requirements**

1. Computer with Windows 7 or Windows 10 operating system.
2. Computer with USB port.
3. Download the upgrade file to your computer. Ensure to unzip the file.
4. Prepare the following equipment:
  - a. CPS Cable kit is **HKKN4027A**. Use the programming cable with part number **PMKN4154A** in this kit.
  - b. Single Unit Charger/docking station PMLN6383A (2).
  - c. Turn the toggle switch on the CPS cable to 'Digital' (3).
  - d. Connect the CPS cable to the computer via USB port and the micro USB to the single unit charger (4).
  - e. Ensure the battery is inserted in the radio. Do not turn the radio ON until further instruction.



**Note**

1. Only 1 radio can be connected to 1 computer at any time.
2. Please ensure radio battery is fully charged before update commences.

**Upgrade Steps**

1. Put the radio into the flashing mode by long pressing PTT button + Side button 1 and turn the radio ON (using the ON/OFF/Volume Knob, 1) at the same time. The radio LED will turn to green color.
2. Put the radio into the single unit charger (ensure that the single unit charger is connected to the computer and the toggle switch is set to 'Digital').
3. Open the application file FW\_Update\_XT660d\_1.00.13 within the upgrade folder downloaded.
4. Under COM port, click Refresh. The tool should automatically select the correct COM port. In case of failure, manually select the correct COM port.
5. Click Select FW and navigate and select the FW file (.bin) downloaded to your computer.
6. Once selected the correct firmware file .bin - click Start (Enter) to start the upgrade process. The device LED will blink.
7. The upgrade tool will begin re-flashing. Once the radio has upgraded successfully it will automatically restart.